



US010793474B2

(12) **United States Patent**
Lee

(10) **Patent No.:** **US 10,793,474 B2**

(45) **Date of Patent:** **Oct. 6, 2020**

(54) **CERAMIC COMPOSITION**

(71) Applicant: **NATIONAL PINGTUNG UNIVERSITY OF SCIENCE & TECHNOLOGY**, Pingtung County (TW)

(72) Inventor: **Ying-Chieh Lee**, Pingtung County (TW)

(73) Assignee: **NATIONAL PINGTUNG UNIVERSITY OF SCIENCE & TECHNOLOGY**, Pingtung County (TW)

(*) Notice: Subject to any disclaimer, the term of this patent is extended or adjusted under 35 U.S.C. 154(b) by 0 days.

(21) Appl. No.: **16/264,764**

(22) Filed: **Feb. 1, 2019**

(65) **Prior Publication Data**

US 2019/0241474 A1 Aug. 8, 2019

(30) **Foreign Application Priority Data**

Feb. 7, 2018 (TW) 107104362 A
Jul. 25, 2018 (TW) 107125738 A

(51) **Int. Cl.**
C04B 35/057 (2006.01)
C04B 33/13 (2006.01)
C04B 33/32 (2006.01)
C04B 33/135 (2006.01)
C04B 35/195 (2006.01)

(52) **U.S. Cl.**
CPC **C04B 35/057** (2013.01); **C04B 33/131** (2013.01); **C04B 33/1352** (2013.01); **C04B 33/323** (2013.01); **C04B 35/195** (2013.01);

C04B 2235/3201 (2013.01); **C04B 2235/3206** (2013.01); **C04B 2235/3208** (2013.01); **C04B 2235/3217** (2013.01); **C04B 2235/3232** (2013.01); **C04B 2235/3272** (2013.01); **C04B 2235/34** (2013.01); **C04B 2235/3418** (2013.01); **C04B 2235/442** (2013.01); **C04B 2235/448** (2013.01); **C04B 2235/77** (2013.01)

(58) **Field of Classification Search**
CPC ... **C03B 33/131**; **C03B 33/323**; **C04B 35/057**; **C04B 33/131**; **C04B 33/323**
See application file for complete search history.

(56) **References Cited**

U.S. PATENT DOCUMENTS

2018/0305254 A1 * 10/2018 Ben Haha C04B 7/3453

FOREIGN PATENT DOCUMENTS

CN 104479794 A 4/2015
WO WO-2016202449 A1 * 12/2016 C04B 28/021

* cited by examiner

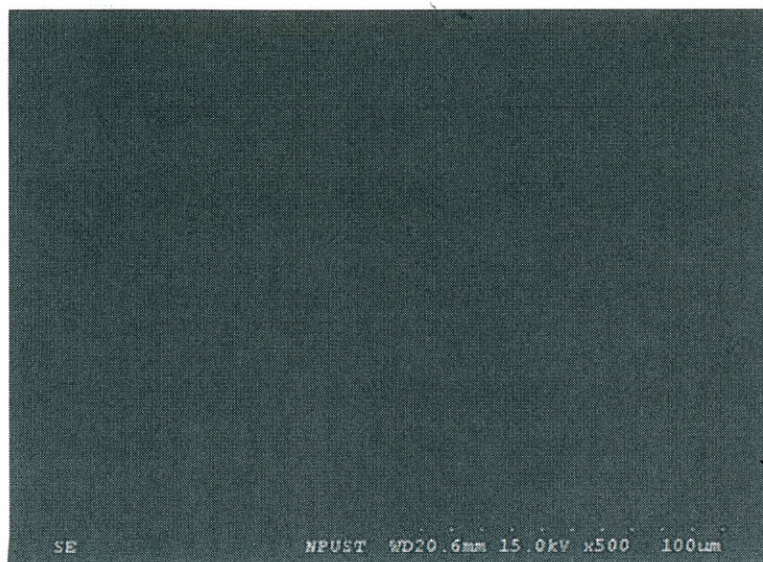
Primary Examiner — Karl E Group

(74) *Attorney, Agent, or Firm* — WPAT, PC

(57) **ABSTRACT**

A ceramic composition which can be used as a sintering aid includes 1-2 mol % of magnesium oxide (MgO), 5-15 mol % of aluminum oxide (Al₂O₃), 25-40 mol % of silicon dioxide (SiO₂), 40-55 mol % of calcium oxide (CaO), 0.1-8 mol % of ferric oxide (Fe₂O₃), 0.1-2 mol % of sulfur trioxide (SO₃) and 0.1-2 mol % of titanium oxide (TiO₂). Alternatively, the ceramic composition includes 1-8 mol % of MgO, 5-15 mol % of Al₂O₃, 25-40 mol % of SiO₂, 40-55 mol % of CaO, 0.1-8 mol % of Fe₂O₃, 0.1-2 mol % of SO₃ and 0.9-2 mol % of TiO₂.

4 Claims, 2 Drawing Sheets



SE

MPUST WD20.6mm 15.0kV x500 100um